

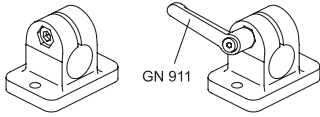
- 1
- 2
- 3
- 4
- 5
- 6
- 7
- 8
- 9
- 10
- 11
- 12
- 13
- 14
- 15
- 16
- 17
- 18**

MATERIAL

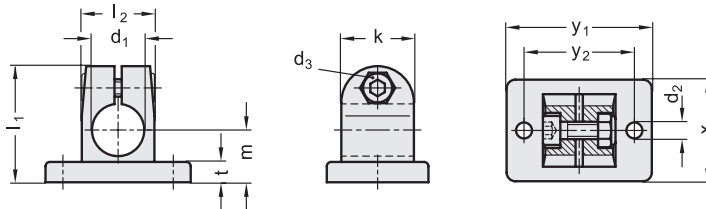
Stainless steel, matte finish.
AISI 304 stainless steel screw and nut.

FEATURES AND APPLICATIONS

The assembly hole of GN 145-NI connecting clamps allows an excellent match with tubes GN 990 (see page 1954).
The clamping screws d3 may be replaced by clamping kits GN 911 (see page 1958).



Conversion Table	
1 mm = 0,039 inch	
d1	
mm	inch
12	0.46
14	0.55
15	0.59
16	0.63
18	0.71
20	0.79



INOX STAINLESS STEEL **METRIC**

Code	Description	d1	d2	d3	k	l1	l2	m	t	x	y1	y2	d3 Clamping kit	△
GN.45433	GN 145-B12-2-NI	12	5.5	M6	25	40	25	18	7	35	50	38	GN 911-M6-22	177
GN.45453	GN 145-B14-2-NI	14	5.5	M6	25	40	25	18	7	35	50	38	GN 911-M6-22	170
GN.45473	GN 145-B15-2-NI	15	5.5	M6	25	40	25	18	7	35	50	38	GN 911-M6-22	170
GN.45493	GN 145-B16-2-NI	16	5.5	M6	25	40	25	18	7	35	50	38	GN 911-M6-22	164
GN.45513	GN 145-B18-2-NI	18	5.5	M6	25	40	25	18	7	35	50	38	GN 911-M6-22	159
GN.45523	GN 145-B20-2-NI	20	5.5	M6	25	40	25	18	7	35	50	38	GN 911-M6-22	153